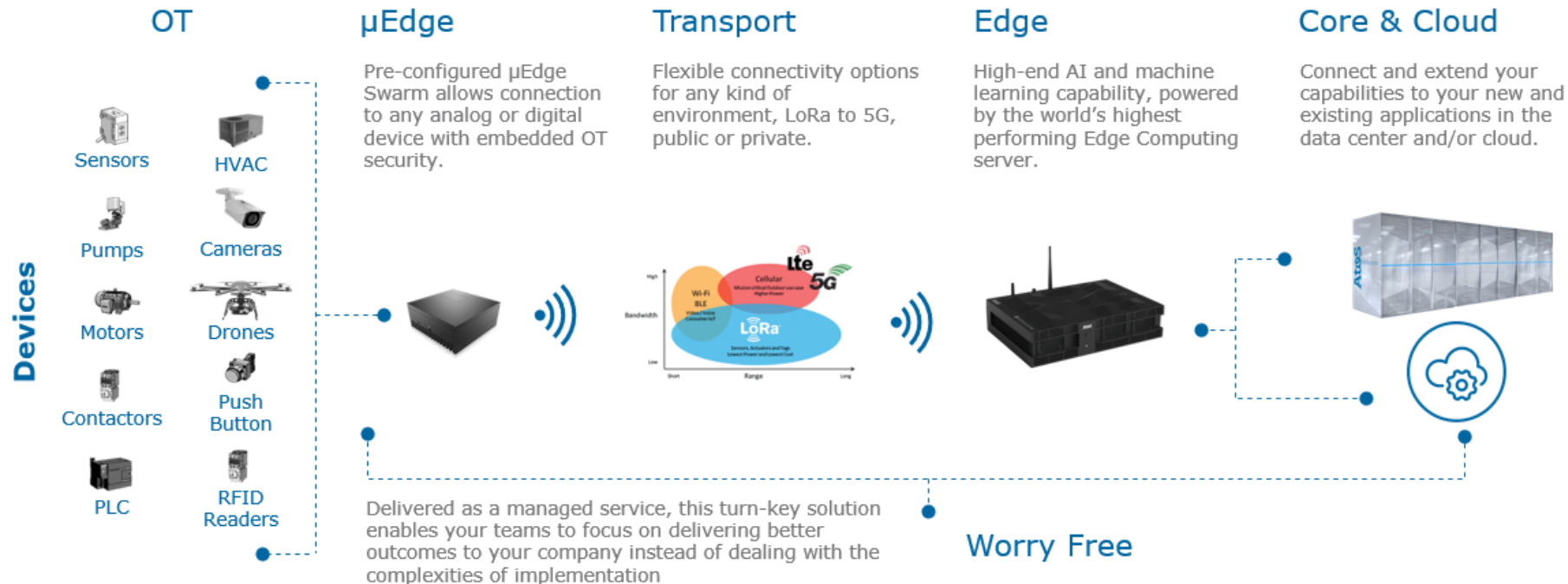


# Edge

**Albert Seubers**

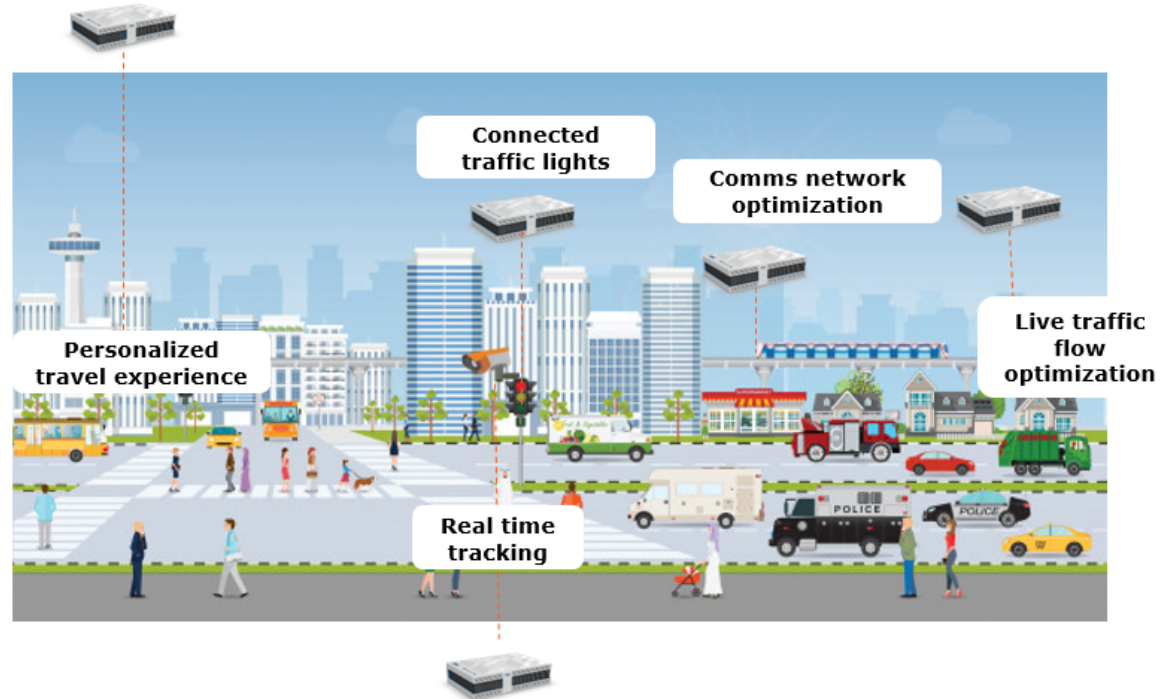
Director Global Strategy IT in Cities

# Edge



# Edge in Cities

**Edge Computing is a massive revolution, enabling compute close to data sources, outside of datacenters**



# Post Cloud

Due to the rapid growth of IoT devices, more and more data is moving from the Edge to the Data Center /Cloud.

## Public environments



**Data center** **Cloud**



Canopy

Google Cloud Platform



Microsoft Azure



AWS

# Edge to secure our privacy

Due to the rapid growth of IoT devices, more and more data is moving from the Edge to the Data Center /Cloud.

**Public environments**



**Internet/  
Network**

**Internet  
bandwidth  
constraints**

**Security**



**Internet latency constraints**

**Data  
center**

**Cloud**



Canopy

Google  
Cloud Platform



Microsoft  
Azure



AWS

## Our customer need



Improve safety and comfort of citizens



Track people of interest

## Our customer result



Better safety and comfort of citizens



Reduced cost of monitoring and control.

## BullSequana Edge implementation



Detect Automatically and real time abnormal situation or behavior



Person of Interest Tracking with Use of Edge servers and Codex AI Video Intelligence



Powered with  Codex AI Suite

# Concept Case - Traffic management

## Customer need



Detect Fraud : two cars that follow each other at the toll , Unmarked Car...



Improve classification of vehicles to avoid claims and fraud (Axles Counting )



Free flow cashing: Replace ticket system by ALPR (Automatic License/Number Plate Recognition )

## Benefits



Toll construction capacity without barrier without civil engineering and without interruption of traffic



Pricing Flexibility



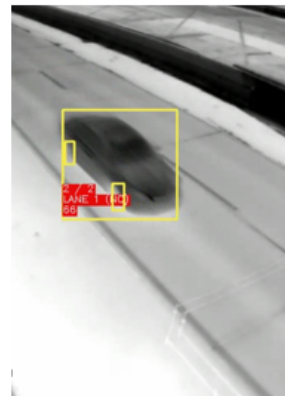
Reduce fraud & claims

## BullSequana Edge implementation



Toll free barrier based on video & infra-red camera.

Allows a very fine rate for users (category of vehicle, number of axle, presence of trailer, etc.).



Partner





# Appendix

Atos, the Atos logo, and Atos|Syntel are registered trademarks of the Atos group. September 2020. © 2020 Atos. Confidential information owned by Atos, to be used by the recipient only. This document, or any part of it, may not be reproduced, copied, circulated and/or distributed nor quoted without prior written approval from Atos.

**Atos**