

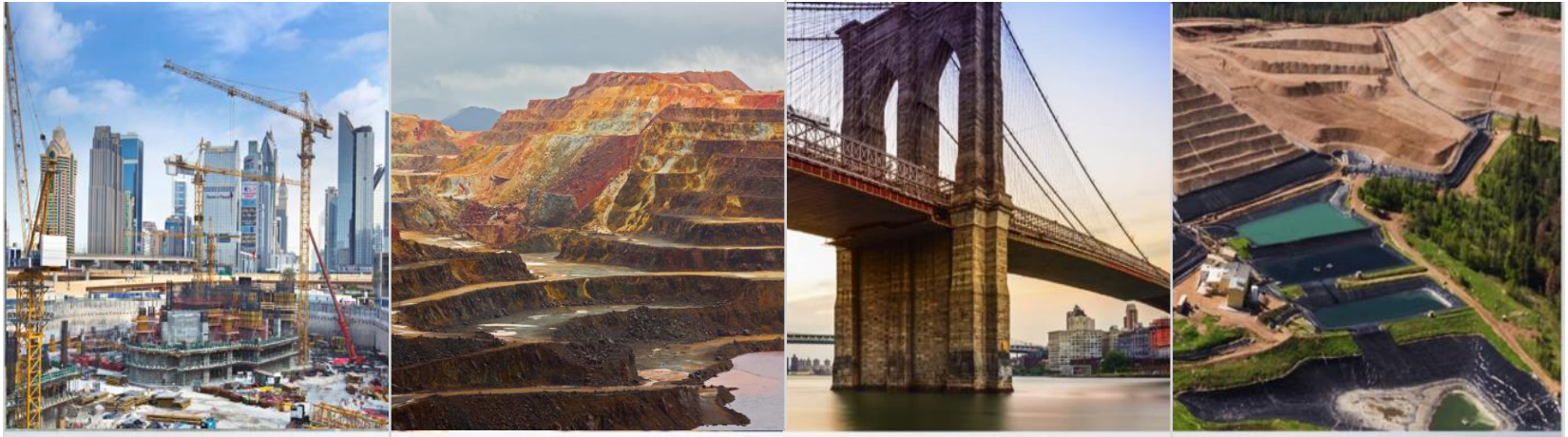
# Cloud-edge orchestration

Dr. Andrea Bartoli  
[abartoli@worldsensing.com](mailto:abartoli@worldsensing.com)

---

# Worldsensing – global IoT leader

WorldSensing, a global IoT leader, helps mining and construction companies in their critical assets monitoring through its end-to-end solutions



Our technologies control more than 150,000 sensors in 60 countries



# The Solution

Digitize monitoring processes to minimize costs and increase efficiency

loadsensing<sup>®</sup>



Reduce  
cost and speed-up ROI



Increase  
Efficiency

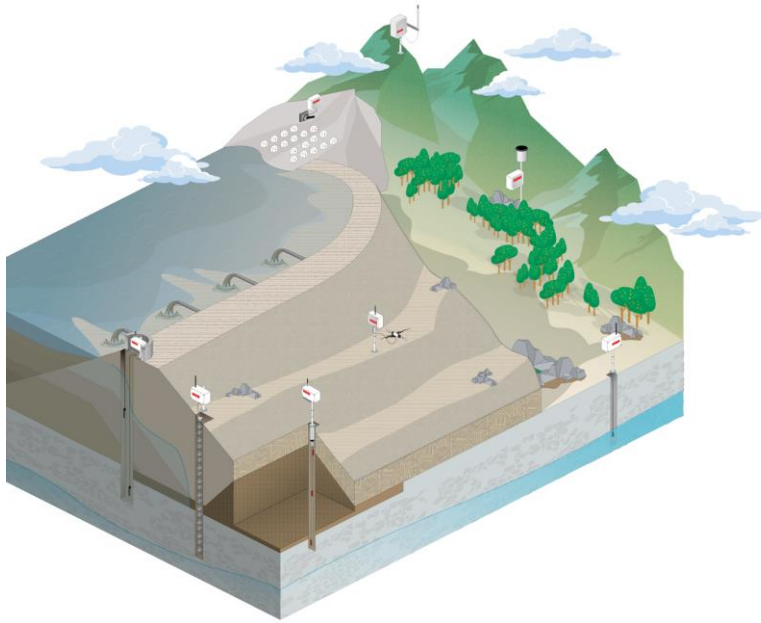


Guarantee  
safety



Compliance  
with global Standards

# Loadsensing in mining

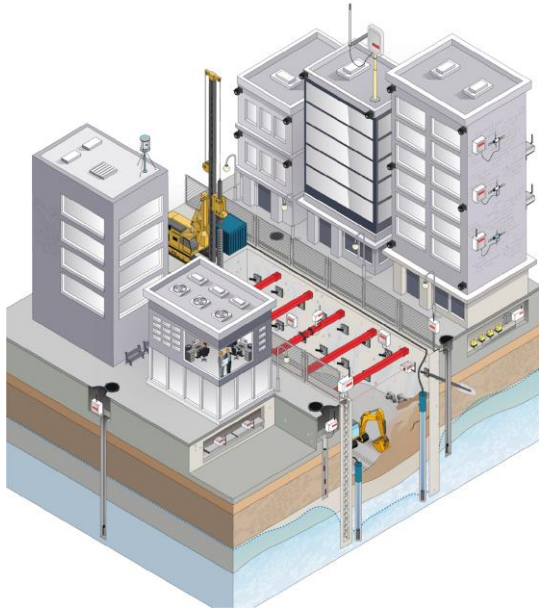


- Pore water pressure
- Horizontal displacement
- Water level
- Rainfall monitoring
- Movement across surface cracks
- Vertical deformation at various depths
- Tension monitoring
- Remaining load in the anchorages
- Water quality monitoring





# Loadsensing in construction

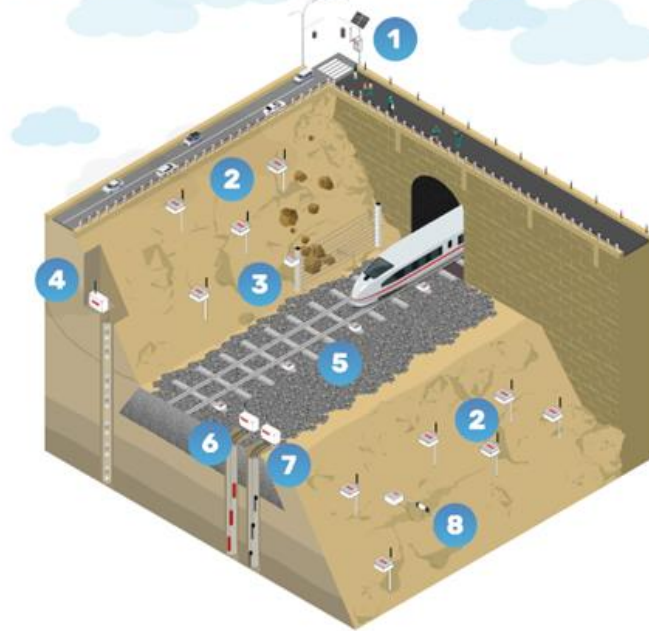


- Pore water pressure
- Horizontal displacement
- Water level
- Liquid level settlement
- Movement across surface cracks
- Vertical deformation at various depths
- Tension monitoring
- Remaining load in the anchorages
- Ground movement



# Loadsensing in railway

## IoT Monitoring in Rails



- Slope lateral displacement
- Rock fall
- In-depth lateral displacement of subsoil
- Railway track condition (cant, twist and height variation)
- Pore water pressure
- Vertical displacements linked to soil settlement
- Movement across surface cracks (retaining walls & tunnels) and soil cracks (slope and embankment failure)
- Tension monitoring



# Cloud



# Edge





---

# Cloud Vs Edge



Scalability VS Security



# Risk management optimization

EDGE

CLOUD



---

The end of one decade...  
The beginning of a new decade